



Enel Américas ESG focus for Investors

Our strategy for sustainable progress¹



Enel Américas' sustainable strategy directly targets 4 SDGs while contributing to all the others



The ambition of **zero emissions** lies at the heart of the strategy
Enel Américas has been implementing, contributing to a **just transition** by taking concrete actions that address social impacts of climate change mitigation and adaptation measures, together with **employees, suppliers, communities** and **customers**



Index

- Climate change
- Natural capital
- Human rights and Health & Safety
- Employees, Suppliers and Communities
- Growth accelerators
- Corporate Governance
- ESG Ratings

1. 2024 -26 plan data, where not present, will be disclosed in due course

Climate change

Zero emissions ambition



Operating positioning to reach short and medium-term decarbonization targets



	2023E	2026
RES capacity	13.1	13.1
RES capacity on total	90%	98%
GHG free production on total	86%	99.4%
Network losses	11.9%	11.3%
SAIDI (hours)	7.2	6.9
Smart meters (thousand)	0.9	2.9
Grid customers	19.5	20.5

Weathering climate-related events



Climate adaptation approach

Resiliency measures

Increasing asset resilience and profitability to reduce climate physical risk by implementing adaptation measures on existing assets and ensuring resilience by design for new ones

Response management

Preparedness to respond to adverse events leveraging on weather and climate analyses, to prioritize efforts and ensure quick services restoration

Opportunities

New business opportunities or product design to adapt to climate changes and facilitate adaptation for all stakeholders

Main steps towards Group adaptation plan



Climate hazard assessment

Climate scenarios to assess expected changes in physical phenomena globally



Vulnerability to physical phenomena

Quantifying potential damages on assets and business interruptions as a function of intensity and probability of phenomena



Economic impact

Assessing the expected economic impact of climate change considering hazard and vulnerability of climate change



Adaptation plan

Define adaptation measures to be implemented while incorporating climate analysis into capital allocation

A climate change proof company: leveraging on climate and asset data analysis to develop effective adaptation measures to preserve profitability, foster resilient business models and exploit opportunities

Natural Capital

The flip side of climate



Environmental Sustainability | Biodiversity



Enel Américas's roadmap on biodiversity conservation is in line with the Kunming-Montreal global biodiversity framework.

The Policy foresees the application of the Mitigation Hierarchy Principle in all project phases

- ◆ Including **Biodiversity Risks Assessment** to evaluate company-wide risk
- ◆ Developing a **Biodiversity Action Plan** taking into account the specific aspects of **local environments**
- ◆ **Minimizing** the impact of Enel sites on **habitats** and threatened **species** included on the **IUCN¹ Red List**

Enel's Commitment

- ◆ **No Go in UNESCO World heritage natural site areas²**
- ◆ **No Net Loss on selected projects in high biodiversity areas starting from 2025**
- ◆ **Biodiversity No Net Loss for new infrastructures by 2030**
- ◆ **No Net Deforestation by 2030**

2023 ⁴

- ◆ Consolidation of the Group **indicators** and the biodiversity performance **monitoring process**
- ◆ Internal deployment of the **TNFD³ Guidelines for impacts, risks and opportunities evaluation**

2024-26 Targets ⁴

- ◆ Consolidation of **nature-related impacts, risks and opportunities** assessment and update of related action plan
- ◆ **Awareness campaigns** on Environmental or Nature Capital conservation Topics

Enel Américas applies an integrated approach for optimal management of use of water resources and their protection

Water quality conservation

Downstream of internal **recoveries and reuses**, wastewater discharged from the plants is returned to the surface water body. Discharge always takes place downstream of a **treatment process** that removes any pollutants present to a level where they will **not** have a **negative impact** on the receiving **water body**, in compliance with the limits provided for under national regulations and by operating permits

Strategic goals

Enel Américas is constantly **monitoring** all its production sites located in **water stressed areas** in order to ensure that **water** resources can be **managed efficiently**

Environmental Sustainability | Pollutants and Waste



Air Quality

Enel Américas' commitment to **improving the air quality in areas** where the **Group operates** is testified by the constant reduction of the main atmospheric pollutants associated with thermal production



Pollutants

Enel Chile adopts the **best available techniques** for the **reduction** of the pollutants



Waste Reduction

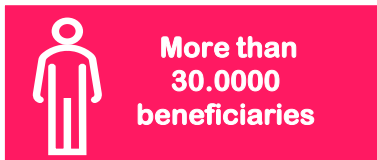
Constant commitment towards **reduction of waste** production, as well as to the definition of new methods of reuse, recycling and recovery in the perspective of a **circular economy**

Environmental Sustainability

Biodiversity of Colombia



- Biodiversity as a **sustainability umbrella** Enel Colombia y Central América
- We have more than **100** initiatives mapped from the work we have been developing for more than **15** years, which motivates us to build this great umbrella and strategy. Presence in more than **10** ecosystems.
- Contributing to the **2030 Agenda** - group commitment - Sustainability Plan
- Contribute to the most important global sustainability indexes (DJSI, FTS4GOOD, VIGEO, AICHI targets).



Environmental Sustainability

Biodiversity



This work has given us the opportunity to learn about the dynamics and characteristics of each ecosystem, which has allowed us to define and implement actions aimed at their protection, conservation and restoration, while adding value to the regions and their communities.



Enel Biodiversa strategy is structured under strategic pillars composed of programs that support the actions taken in the area of Biodiversity

Environmental Sustainability

Enel Biodiversa- Tropical Dry Forest – El Quimbo

Enel
Biodiversa



Conservation, protection and restoration actions...

- 7.199 restored hectares of 11.079.
- 3.598,29 hectares registered as Natural Reserve of the Civil Society.
- 489.320 trees of 62 native species have been planted.
- “Attalea” first Tropical Dry Forest Research Center of Colombia: More than 3.000 visitors.
- New species of bromeliad was discovered for Colombia (*Pitcairnia huilensis*).
- 10 scientific articles related to Dry Tropical Forest have been published in national journals indexed to Colciencias, two (2) in international journals
- Tropical Dry Forest Guardians: 135 cocoa farmers and cocoa producers.
- We launch the Plant Book of the El Quimbo Tropical Dry Forest.
- Global Compact: Recognition of Good Practices in Sustainable Development 2021 : Tropical Dry Forest Ecological Restoration Plan - El Quimbo.



MAURICIO LÓPEZ GONZÁLEZ
DIRECTOR EJECUTIVO

ANA MARIA FERGUSON
VICEPRESIDENTA DE ARTICULACIÓN
PÚBLICO PRIVADA

Pacto Global
Rest Colombia

Cámara
de Comercio
de Bogotá





Enel Shares Gardens in Network



RESIGNIFYING OUR ASSETS



Location: The program is developed in 6 cities currently: Mauá, Osasco, Santo André, São Caetano do Sul, São Bernardo do Campo, São Paulo.

Business line: Grids / Distribution

Subcategory: Entrepreneurship and income generation

Beneficiaries 2019 - 2023: 1.092

Main Issues: Controlled occupation of land below sub transmission lines

BUSINESS ISSUE

Invasion of areas, disposal of garbage, rubble and/or sewage, high cost of maintenance, inspection and prevention of invasions.

PROJECT

Gardens in Network was a pilot project by Enel São Paulo, which was born out of the need to increase the quality of use of strips under the distributor's transmission lines, as well as to increase the safety of the population and inhibit the risk of invasions, by implementing and developing urban gardens.

VALUE FOR ENEL

Occupancy based on lending (comodato) allows:

- € 229.230/year avoided (reduces maintenance costs)
- More security for the asset;
- Avoids illegal disputes due to irregular occupation;
- Avoids the risk of criminal liability for company administrators;
- Create a favorable relationship with community;
- 0,9M€ in positive media

VALUE FOR STAKEHOLDERS

- Promoting entrepreneurship
- 1,5 of minimum wage income for each urban farmer
- Until 2.000 consumers/month in the neighborhood
- Food safety



3 pilots (since 2019) + 50 new gardens (2023) + 100 (on going with Municipality)

Human rights and H&S

*Putting people at the
centre*



Human Rights: Our commitment



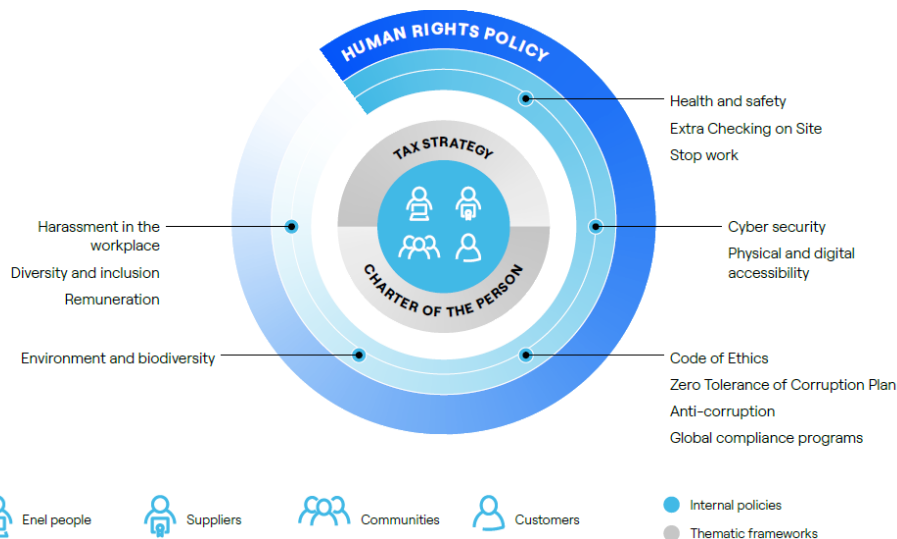
Enel Américas' Human Rights policy

It refers to internationally recognized human rights as defined in the **International Bill of Human Rights** and in the **International Labor Organization Conventions**¹

It **addresses employment practices** and **community relations** and **society** through 12 principles, including:

- Rejection of practices like modern slavery, forced labor, and human trafficking
- Commitment to promoting diversity, inclusion, and equal treatment and opportunity, guaranteeing that people are treated fairly and valued for their uniqueness
- Focus on protection of the environment since a safe, clean, healthy and sustainable environment is integral to the full enjoyment of a wide range of human rights
- Respecting the rights of local communities, including the rights of indigenous and tribal peoples

Embedding the commitment across relevant internal functions and processes is key to prevent and mitigate adverse human rights impacts as well as fostering decent work, inclusive economic growth and sustainable development

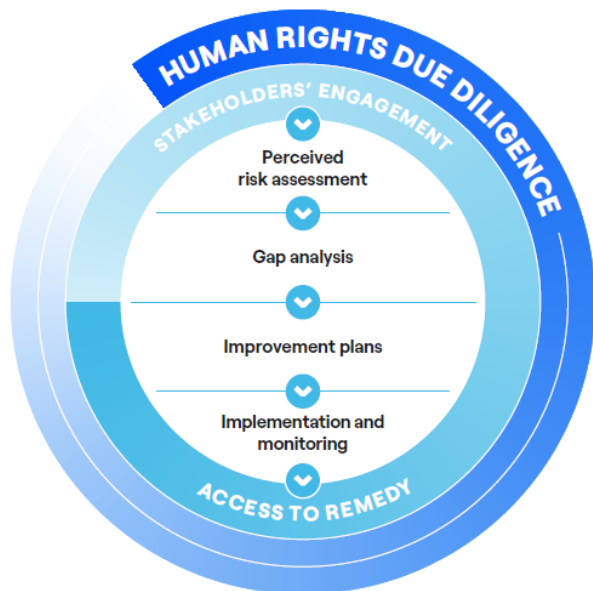


1. Underlying the Tripartite Declaration of Principles concerning Multinational Enterprises and Social Policy and applicable to business practice

Human Rights: Our due diligence process



Involvement of both internal and external stakeholders, with the aim of identifying if any of our operating procedures and processes require an improvement plan to ensure adherence with the commitments undertaken in our Human Rights Policy



Perceived risk assessment

Identification of salient human rights issues to better understand where to focus our efforts and resources, through consultation with the relevant stakeholders

Gap analysis

Assessment of our operating and risk monitoring processes and identification of any potential shortfall

Improvement plans

Definition of the necessary remedies to tackle the residual risk identified in the gap analysis and implementation of the actions

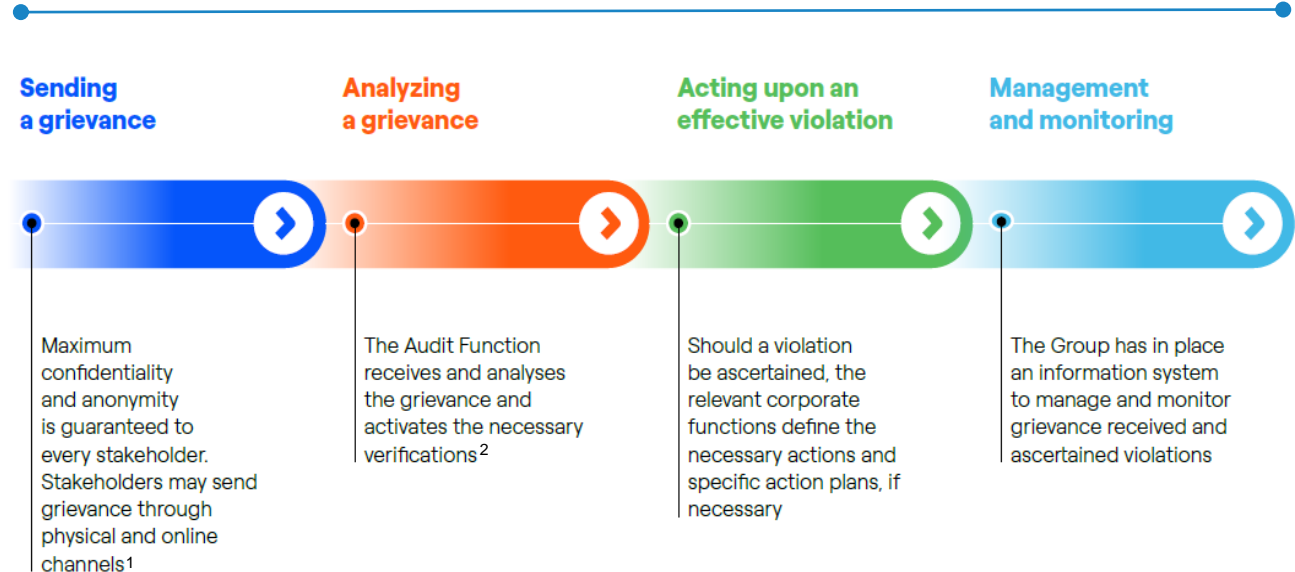
Human Rights: Access to remedy



Grievance mechanism

- A whistleblowing channel, available to internal and external stakeholders
- Several processes and tools available to the communities in the influence area of our operations
- Customers complaints or information channels

Whistleblowing channel



1. There are also channels at local level and this ensures accessibility to all potentially affected stakeholders in their own language
2. The Audit function reports the violation to the Board Committee, the Chairman and the CEO, who assess if the BoD should be informed about the most significant cases

Health & Safety



Health & Safety Management system is based on hazard identification, on qualitative and quantitative risk analysis. Certification of the whole Group according to ISO 45001 and relative implementation

Safety Awareness Reinforcement

- **Communication campaign “Safety is done together”** aimed to promote everyone’s personal contribution to safety improvement
- **Awareness-raising activities** focused on fatalities: "No More" sensibilization campaign
- **Cross risk prevention training focused on daily activities at work: ergonomics, generic risks, and driving**

Digitalization & Innovation

- Development of **digital tools to support safety management processes**
- **Innovative projects ongoing to arise Safety Level/Awareness** within Enel Group (i.e. new training methodology based on “nudge”)

Data driven approach to contractors' qualification and management

- Reinforcement of **data driven approach** to safety contractor management
- Adoption of a **risks based methodology** to assess the **level of H&S risk** of Merchandise Groups (MGs) and define related qualification path

2023⁴

Lost Time Injury Frequency Rate (LTI FR)¹ **0.44**

More than 3 days Frequency Rate (FR>3 dd)² **0.24**

High Potential Accident FR (HiPO FR)³ **0.074**

1. LTI FR: ratio between number of occupational accidents with at least one day absence and millions worked hours.

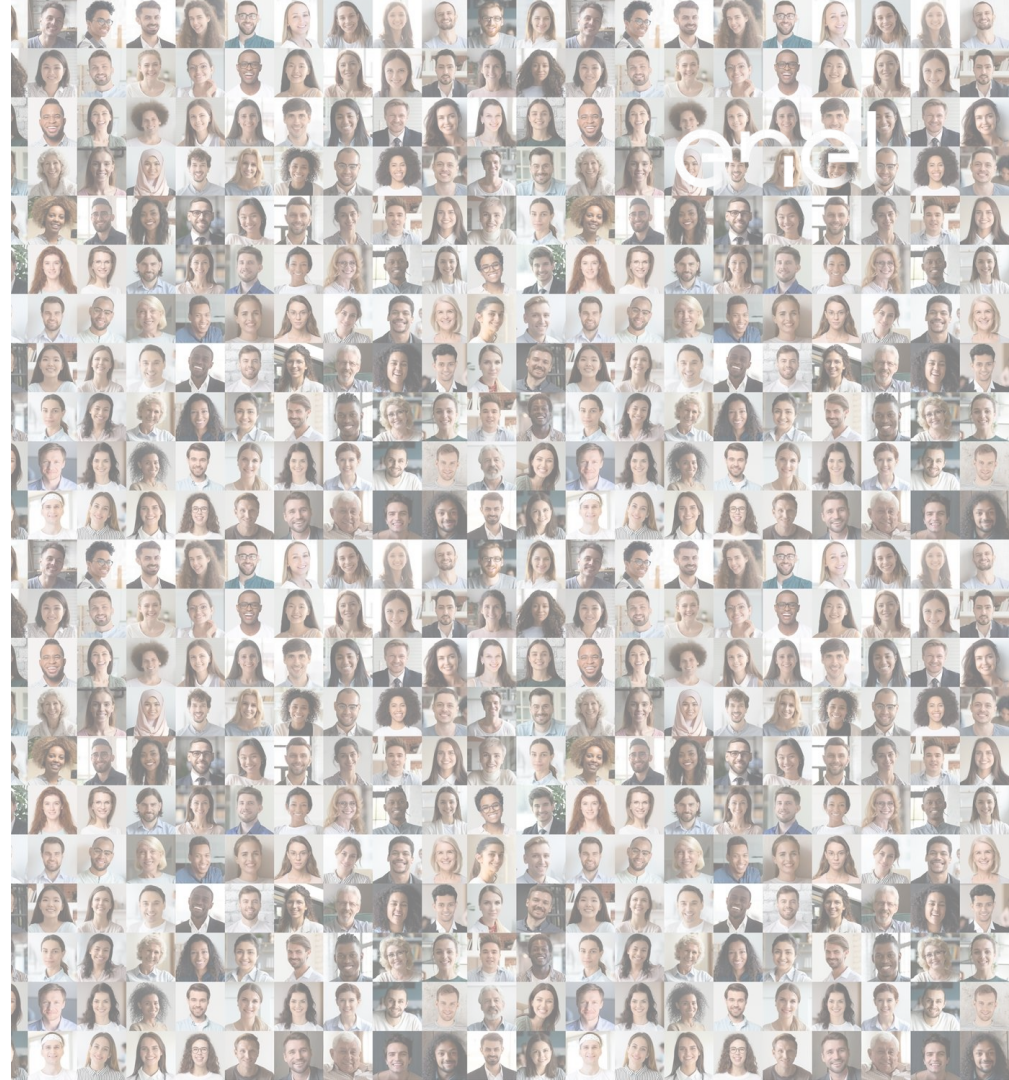
2. FR > 3 dd: Ratio between number of occupational accidents with more than three days absence and millions worked hours.

3. HiPO FR: ratio between number of occupational accidents whose dynamic, independently from the damage, could have resulted in a Life Changing or a Fatal Accident, and millions worked hours.

4. As of September 30th 2023.

Employees, Suppliers and Communities

*Ensuring progress
across the value chain*



Diversity and Inclusion | Enel Américas' people



Purpose

Enel has a clear commitment to respecting diversity, inclusion, and equal treatment and opportunity, to guaranteeing the right to working conditions that are respectful of personal dignity as well as creating a working environment where people are treated fairly and valued for their uniqueness

Empower the growth and increase representation of women in the organization

2023¹

Women in selection processes (%)

53

Female middle managers (%)

29

Female managers (%)

33

1. Data as of September 2023.

Sustainability and Innovation in the Procurement Process | Suppliers and Contractors



Supplier qualification system

All **sustainability dimensions** are **evaluated**: health and safety, environment and human rights

Qualified supplier assessed for ESG performance¹ (%)

2023E

100

Tender and contracting process

Inclusion of **sustainability** and **incentive factors**

- Human Rights clauses
- Carbon footprint target
- Material Passport
- Incentive Factors for:
Renewable energy mix; low carbon emissions transport; materials recovery; etc.

Monitoring systems

Evaluation of **suppliers performances** based also on **sustainability dimensions**

Innovation

Innovation challenges open to suppliers to promote sustainable impact

1. For health & safety, environmental and human rights aspects. Rounded figured

Engaging communities



Our strategy is based on a model of business development and management in continuous interaction with the communities to create long-term shared value, in full respect of human rights

A well-defined stakeholder engagement process, in line with relevant international standards (such as the **UN Guiding Principles on Business and Human Rights** and the **OECD Guidelines for Multinational Enterprises**):

- ◆ incorporate responsible business conduct into policies and management systems
- ◆ prevent or mitigate impacts
- ◆ monitor the implementation of improvement plans and results
- ◆ communicate how impacts are managed

Stakeholder engagement process

- ◆ Identify the stakeholders in the area of influence, ensuring representation of all groups affected
- ◆ Conduct socio-economic and environmental context analyses
- ◆ Ensure that the consultation is free, preventive, inclusive, adapted to the local context, bidirectional and well documented, in line with international reference standards
- ◆ Share all the relevant information about the project
- ◆ Involve independent third parties in negotiation processes
- ◆ Support local communities in project monitoring through local training
- ◆ Provide an access channel for any reports from people who need to contact us



Dialogues Ombudsman (mobile and 0800) Brazil



SUPPORT TO LOCAL COMMUNITIES



Location: The program is developed in all cities in the country where EGP is present

Business line: Renewable

Subcategory: Community networks

Beneficiaries 2023: 295*

Main Issues: Infrastructure (Access and Property Structure) and debts (Supplier Payments)

*January to October

BUSINESS ISSUE

Compliance with IFC's Performance Standards, Permanent communication channel between communities and company and support Plant's installation environmental permit,

PROJECT

Visits to the residents who are in the park influence area. The team is available to discuss and solve issues related to the project, informing about the progress of the project, how it can impact them and the importance.

VALUE FOR ENEL

- Good relationship with local communities;
- Contribution to quickly identifying and responding to aspects of activities that affect business;
- Avoidance of conflicts and stopped of constructions.
- Compliance with IFCs Performance Standards;
- Risk prevention for human rights issues

VALUE FOR STAKEHOLDERS

- Guarantee of access to communication channels to report community needs.
- Contribution to quickly identifying and responding to aspects of activities that affect communities




Growth accelerators

*Supporting progress of
sustainability*

enel

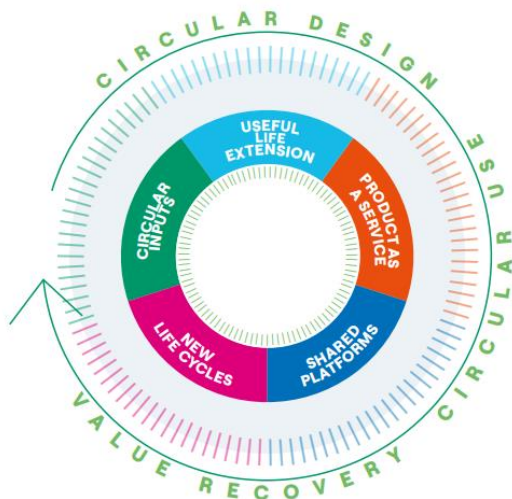


Circular economy



Circular Economy is a strategic lever for Enel Américas with the aim of separating its business activities from raw materials consumption and waste generation

Enel Américas' circular economy pillars



Main circular levers

- **Design and input materials**
Eliminate the need for new resources, especially critical ones (e.g. material substitution, redesign, use recycled inputs)
- **New models for asset use**
Extend products life (e.g. through design, maintenance, regeneration)
- **New life cycle**
Recover and reintroduce raw materials at the end of the life (e.g. recycling, reuse)

Technological innovation and a circular approach allow to minimize pressure on materials critical for the energy transition, thus reducing risk¹

1. Limiting the dependence on raw materials while reducing economic, social and geopolitical risks (with potential disruptions to supply chains)

Circular Economy Colombia & Central America



EGP – Col & Cam

	1.91 M€	Ebitda 1H 2023
	2023	
	139 Ton	Material
	30 GWh	Energy
	6,967m ³	Water
	198 Ton	CO2

Sale of winding waste materials, U5 Guavio stator



24.4 Tn **Reused material**



Circular Entry

Hydraulic and dielectric oil treatments - Centrais



6.62 Tn **Reused material**



Circular Entry

Enel X

Plug & Play Mobile Charging Station

Made with discarded assets/equipment from GPG & Grids to provide charging services to B2B & B2G clients (e-vehicles or construction sites in remote areas).

Results from the Pilot in Medellín

- **18 days** in service
- **3.850 passengers** mobilized
- **30,24 passengers per trip** on average
- **126 trips**
- **7 trips per day** on average
- 221 hours in operation
- Average energy consumption: **1,05 kWh/km**
- **1956 total kilometers** traveled
- Pilot to leverage new electric bus fleet businesses for mass transportation in different regions of the country that are **expected to materialize by 2024**.



Enel Grids

Grid Mining

Objective: Develop a business model where the selection, separation, use and sale of surplus materials from our daily operation is carried out so that they can be used as raw materials by our same suppliers, manufacturers of materials and components, guaranteeing their supply and the stability in the prices of commodities required for the manufacture of products for our infrastructure, finally acquired at a differential market price, guaranteeing the circularity of the materials used in our operation.

- **Around 5 tons** of valuable material monthly
- **Around 2 tons** of polymeric material monthly
- 2023: **Recognized as best business practice** at the Global Compact Congress “Ensuring Sustainability.”



Innovation projects 2023 Colombia



Innovation references



Categoría de descarbonización
Proyecto Bolsa Geotextil
estabilización de taludes



> Others national Awards

Top 10 Ranking of innovations Colombia (ANDI&DINERO)

Awards CIER Colombia: Positions 1 and 3 Positions CECACIER Guatemala – Descarbonizations Category

Social and security Project
Enel Grids



The 2PowerBox is a low-cost solution designed for the internal electrical installation of homes in rural areas of Colombia.

Its main application is to provide reliable access to the power grid in remote locations, improving the quality of life of rural communities and promoting regional development. The 2PowerBox eliminates one of the access barriers to the absence of energy in rural areas, and also enables safe installations for other value-added products and services, providing new development opportunities for Colombia's energy communities.

Poc Result:



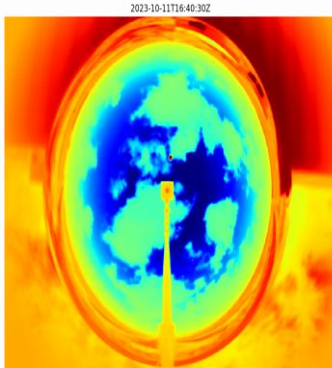


Innovation projects 2023

Colombia



Digitalization E&CM



El Paso photovoltaic central sky chamber project

Solar radiation prediction with AI techniques

Improve generation prediction in photovoltaic plants:

- Meteorological information
- Global models
- Satellite images.
- sky camera images

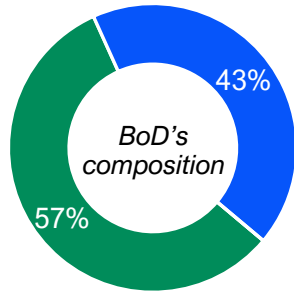
Project in development with a startup **Reuniwatt** (french origin)

Corporate Governance

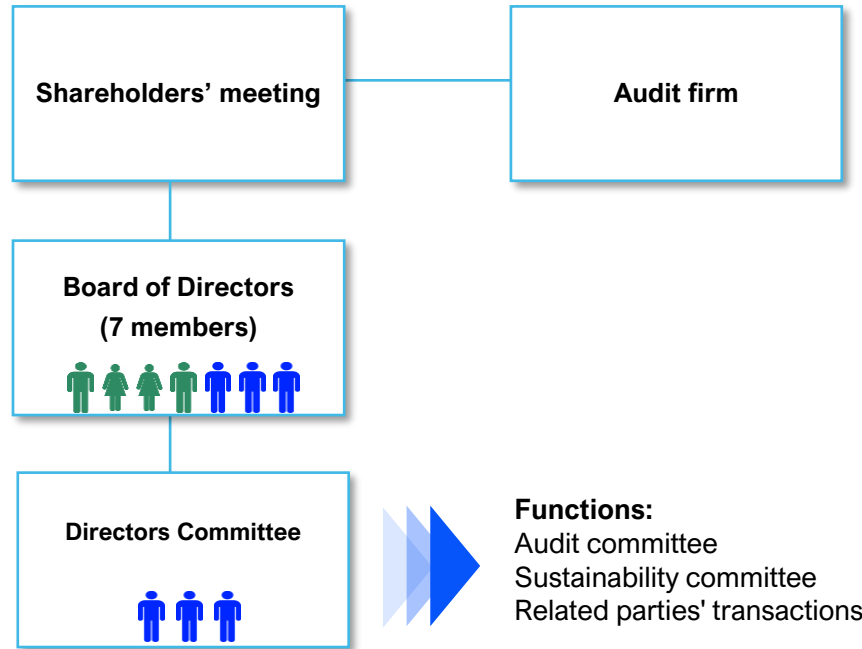
*Ensuring effectiveness
of decision making*



Corporate governance structure



■ Executive ■ Independent



Board composition

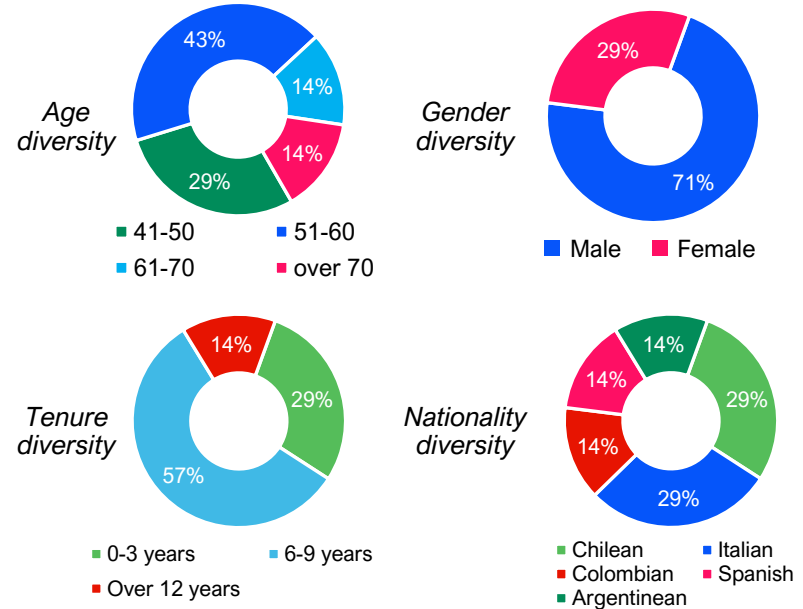


Board of Directors

Borja Acha Besga	Chair
Francesca Gostinelli	Director
Giulia Genuardi	Director
José Antonio Vargas	Director
Hernán Somerville Senn	Directors' Committee (C) Director
Patricio Gómez Sabaini	Directors' Committee Director
Domingo Cruzat	Directors' Committee Director

■ Executive ■ Independent

Board of Directors' diversity



Enel Américas - Policies, principles and codes



Ethics, Integrity, Human Rights, and Diversity

- [Ethical code](#)
- [Zero Tolerance Plan for Corruption](#)
- [Global Compliance Program on Corporate Criminal Liability](#)
- [Criminal Risk Prevention Model](#)
- [Compliance Program for Free Competition Regulations](#)
- [Human Rights Policy](#)
- [Diversity Policy](#)
- [Privacy and data protection policy](#)

Corporate Governance:

- [Corporate Governance practices](#)
- [Action protocol in dealing with public officials and public authorities](#)
- [Protocol of acceptance and offering of gifts, presents, and favors](#)
- [Induction procedure for new Directors](#)
- [Procedure for permanent training and continuous improvement of the Board of Directors](#)
- [Information procedure for shareholders about the background of candidates for Director](#)
- [Habituality policy](#)
- [Tax transparency and reporting](#)
- [Engagement policy – Investor Relations](#)
- [Bylaws](#)
- [Manual for the Management of Information of Interest to the Market](#)

Sustainability:

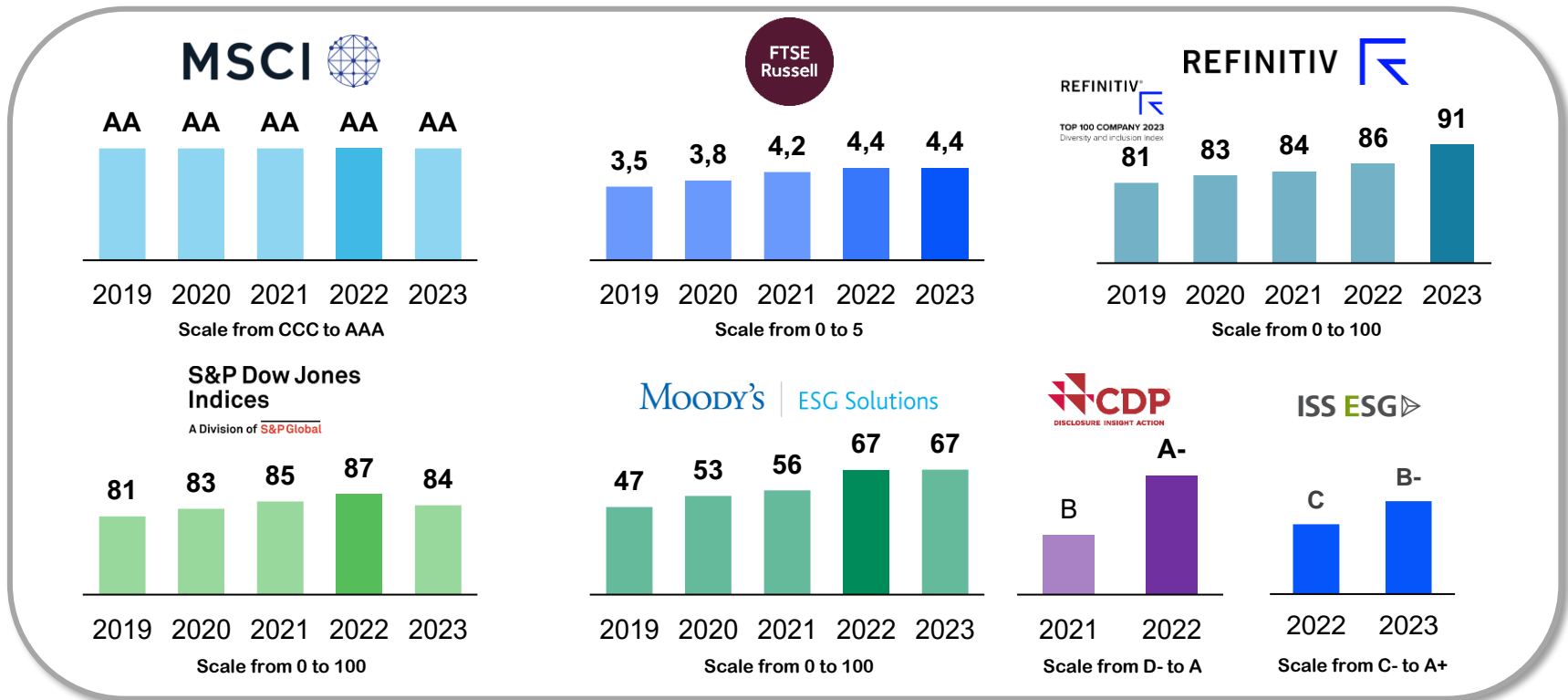
- [Sustainability and Community Relations Policy](#)
- [Environmental policy](#)
- [Biodiversity policy](#)

ESG Ratings

*The touchstone of
Enel's sustainability*



Yearly improvements in our scores ESG positioning



Strategic Plan 2024-2026

Disclaimer



This presentation contains statements that could constitute forward-looking statements. These statements appear in a number of places in this presentation and include statements regarding the intent, belief or current expectations of Enel Américas and its management with respect to, among other things: (1) Enel Américas' business plans; (2) Enel Américas' cost-reduction plans; (3) trends affecting Enel Américas' financial condition or results of operations, including market trends in the electricity sector in Chile or elsewhere; (4) supervision and regulation of the electricity sector in Chile or elsewhere; and (5) the future effect of any changes in the laws and regulations applicable to Enel Américas or its subsidiaries. Such forward-looking statements reflect only our current expectations, are not guarantees of future performance and involve risks and uncertainties. Actual results may differ materially from those in the forward-looking statements as a result of various factors. These factors include a decline in the equity capital markets, an increase in the market rates of interest, adverse decisions by government regulators in Chile or elsewhere and other factors described in Enel Américas' Annual Report. Readers are cautioned not to place undue reliance on those forward-looking statements, which state only as of their dates. Enel Américas undertakes no obligation to release publicly the result of any revisions to these forward-looking statements, except as required by law.

Strategic Plan 2024-2026

Contact us



Rafael de la Haza

Head of Investor Relations

Investor Relations team

Jorge Velis

Nicolás Gracia

Francisco Basauri

Monica De Martino – NY Office



Contacts

Email - ir.enelamericas@enel.com

Channels



Website

www.enelamericas.com



Mobile App

Enel Américas Investors

Download App

iOS



Android



Thank you.